

Instructions

Flush Diaphragm Pressure Sensor

PT216AS/AH/AM/AN/WS/WH/WM/WN/QS/QH



Summary

This series is a sanitary special pressure transmitter with diffused silicon pressure core as sensitive element and 316L stainless steel diaphragm isolation. This series of products has the characteristics of stainless steel welded structure, high precision, non-cavity corrugated flat film, wide measuring range and field display. Widely used in food, medicine and other health industries or fluid pressure measurement and control with particles

Feature

- Non-cavity corrugated flat film
- Variety housing optional
- Protection degree IP67
- Multiple E-connection optional
- Sanitary surface roughness $R_a < 0.38 \mu\text{m}$ can be selected

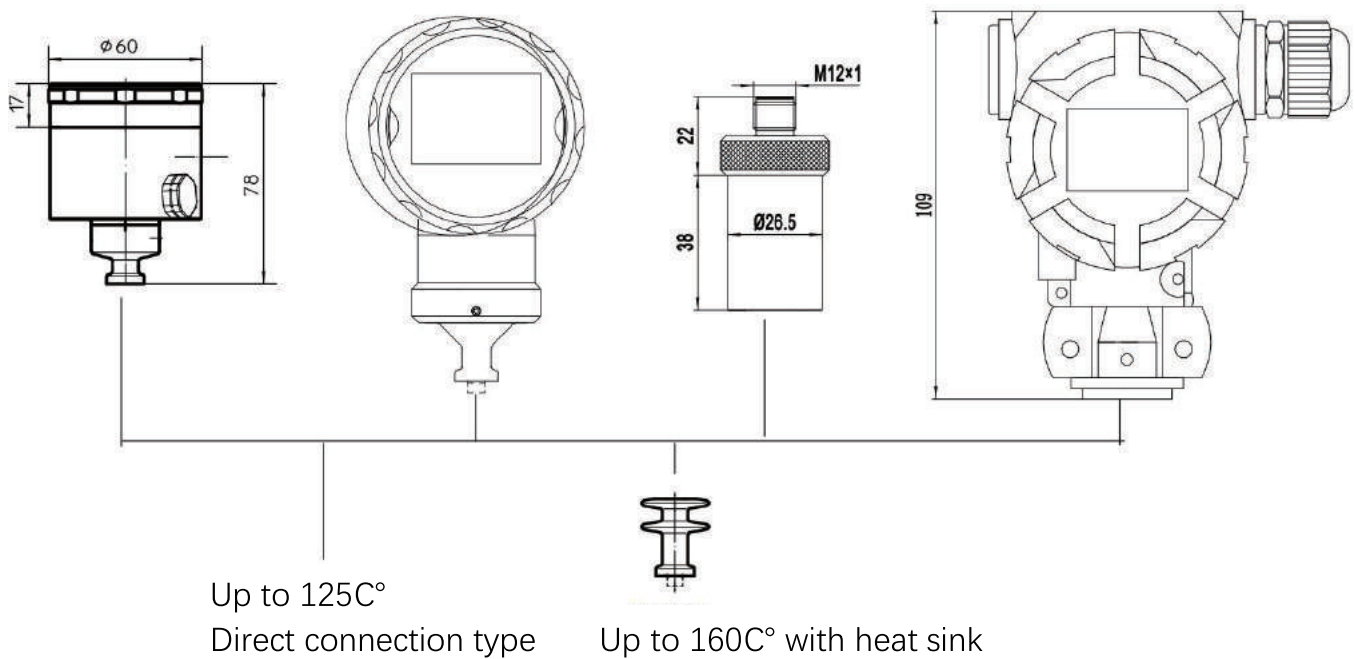
Application

- Food and beverage industry
- Medical pharmaceutical industry
- Biotechnology
- Pigment, spraying
- Chemical industry and paper industry

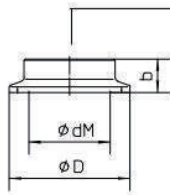
Specification

Product structure	Core Front diaphragm	Flush Diaphragm /Hygienic Type
Pressure range	-1~0bar; 0~400bar	-1~0bac; 0~40bar
Pressure type	Gauge pressure,absolute pressure	
Accuracy	0.5% F.S; 0.25% F.S; 0.1% F.S	
Electrical Performance	2-wire	
Output signal	4 ~ 20 mA	
Power supply	12 ~ 30Vdc	
Overload resistance	<(U-12)/0.02	
E-connection	M12x 1(4-pin),Hirschmann,water-proof connecter	
Diaphragm temperature	-20~125 (direct connection typ) ; -20~160 (heat sink type)	
Ambient temperature	-40~80	
Protection degree	IP67	
Process connection	G1/2,G3/4,G1,M20X1.5 etc	

Dimension

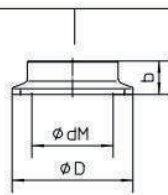


Process connection



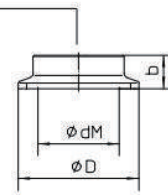
ISO 2852

DN	ZOII	PN	dM	ϕD	b	Code
25	1"	16	22.6	50.5	14	C1
38	1 1/2"	16	34	50.5	12	C2
51	2"	16	46	64	14	C3



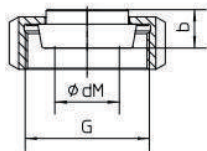
DIN 32676

DN	PN	dM	ϕD	b	Code
25	16	22.6	50.5	14	C4
32	16	30	50.5	14	C5
40	16	34	50.5	12	C6
50	16	46	64	14	C7



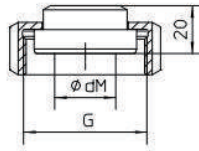
Tri-clamp connection

DN	PN	dM	ϕD	b	Code
3/4"	16	15	25	15	C8
1"	16	22.6	50.5	15	C9
1 1/2"	16	34	50.5	12	C10
2"	16	46	64	14	C11



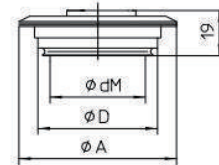
DIN 11851

DN25	PN	dM	b	G	Code
25	40	27	16	Rd. 52*1/6	C12
32	40	36	16	Rd. 58*1/6	C13
40	40	40	16	Rd. 65*1/6	C14
50	25	51	17	Rd. 78*1/6	C15



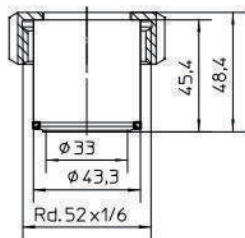
DIN 11864-1

DN25	PN	dM	G	Code
25	40	24	Rd. 52*1/6	C16
32	40	30	Rd. 58*1/6	C17
40	40	34	Rd. 65*1/6	C18
50	25	48	Rd. 78*1/6	C19



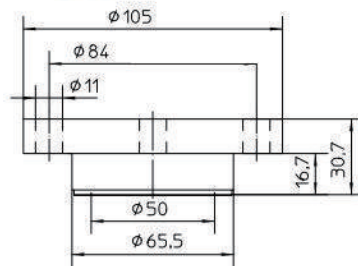
DN	ϕdM	ϕA	ϕD	Code
25 1"	44	66	50	C20
40-125	58	84	68	C21

C22

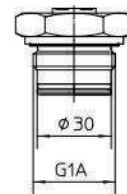


Sanitary type $\phi 43.3$ probe
DN25/PN40

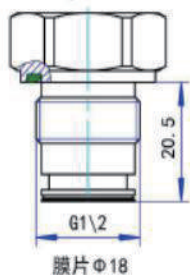
C23



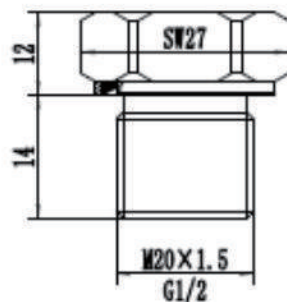
DN50 PN40



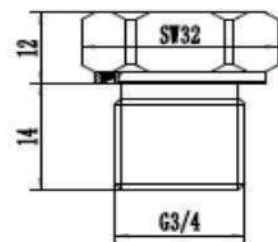
Diffused silicon isolation type



Diffused silicon isolation type






Diffused silicon front type



Diffused silicon front type

E-connection

Hirschmann DIN 175301-803 A			Round connector 4-pin M12 x 1			Leading wire, Shielded					
	Current	Voltage		Current	Voltage		Current	Voltage			
	U+	1/red	1/red		U+	1/brown	1/brown		U+	red	red
	0V		2/black		0V		4/black		0V		black
	S+	2/black	3/green		S+	3/blue	3/blue		S+	black	green

Ordering guide

Series code	PT216	X	-	X	-	X	-	X	-	X	-	X	-	X	-	X	-	X	
Product type	Flush Diaphragm φ 27 shell	AS																	
	Flush Diaphragm-2088 shell	AH																	
	Flush Diaphragm Axial all SS shell	AM																	
	Flush Diaphragm Radial all SS shell	AN																	
	Hygienic Type- φ 27 shell	WS																	
	Hygienic Type-2088 shell	WH																	
	Hygienic Type Axial all SS shell	WM																	
	Hygienic Type Radial all SS shell	WN																	
	Core Front Type φ 27 shell	QS																	
	Core Front Type -2088 shell	QH																	
Pressure type	Gauge pressure			G															
	Absolute pressure			A															
Pressure unit	bar					B													
	MPa					M													
	kPa					K													
Pressure range	Pressure range value x						X												
Process connection	G1/2							G1/2											
	G1							G1											
	G3/4							G3/4											
	M20X1.5							M20											
Output signal	4~20mA							MA											
	0~10VDC (only AS,WS,QS are optional)							10V											
	0~5VDC (only AS,WS,QS are optional)							5V											
E-connection	Hirschmann connector (DIN 175301-803 A)									1D									
	M12x1 4-pin round connector									T									
	water-proof connector leading wire X meters									MX									
Material	SUS304 (Standard)																		
	SUS316L											3L							
Accuracy	0.5%F.S																	-	
	0.25%F.S																	2A	
	0.125%F.S																	1A	
Connecting structure	Standard direct connection,temperature resistance range:-20-125																	-	
	High temperature heat sink type,temperature resistance range:-20~160 (QS and QH are not workable)																	M	